

# Nordhouse Dunes



Piping Plover



Pitcher's Thistle

**The Nordhouse Dunes Wilderness Area is the only Federally designated wilderness in Michigan's lower peninsula and encompasses 3,450 acres of National Forest.**

Nordhouse Dunes is part of the Ludington Dune Ecosystem. The dunes were formed 3,500 to 4,000 years ago and rise up to 140 feet high. The Ludington Dune Ecosystem has the largest fresh water interdunal pond system in the world. Dune grass covers many of the dunes and provides habitat for a variety of wildlife species.

The Nordhouse Dunes are interspersed with woody vegetation such as juniper, jack pine and hemlock. Plant life is varied and includes the Federally endangered Pitcher's Thistle. The sand beach along Lake Michigan varies in width and is home to the Federally endangered Piping Plover, a shore bird that nests on the ground in small cobble beds.

## Contact Information

### Manistee Ranger Station

Phone: 231-723-2211/TTY: 231-723-0124

### Supervisor's Office

Phone: 231-775-2421/TTY: 231-775-3183

**Toll Free:** 1-800-821-6263

### Email:

r9\_hmnf\_website@fs.fed.us

### Website:

www.fs.usda.gov/hmnf



### Statement of Non-Discrimination

The U.S. Department of Agriculture (USDA) prohibits discrimination in all of its programs and activities on the basis of race, color, national origin, age, disability, and where applicable, sex (including gender identity and expression), marital status, familial status, parental status, religion, sexual orientation, political beliefs, genetic information, reprisal, or because all or part of an individual's income is derived from any public assistance program. (Not all prohibited bases apply to all programs.) Persons with disabilities who require alternative means for communication of program information (Braille, large print, audiotape, etc.) should contact USDA's TARGET Center at (202) 720-2600 (voice and TDD). To file a complaint of discrimination, write to: USDA, Assistant Secretary for Civil Rights, Office of the Assistant Secretary for Civil Rights, 1400 Independence Avenue, S.W., Stop 9410, Washington, DC 20250-9410. Or call toll-free at (866) 632-9992 (English) or (800) 877-8339 (TDD) or (866) 377-8642 (English Federal-relay) or (800) 845-6136 (Spanish Federal-relay). USDA is an equal opportunity provider and employer.



United States Department of Agriculture Forest Service

## Nordhouse Dunes National Wilderness Area

Huron-Manistee National Forests



Dunes



Wilderness Trail



Nordhouse Lake





## Conduct and Ethics

### Plan Ahead and Prepare

- ◇ Group size is limited to 10 people or less.
- ◇ Wheelchairs are allowed. Bicycles and all other mechanized equipment are prohibited.
- ◇ Saddle stock and horses are prohibited.
- ◇ Pets must be on a leash.
- ◇ The trail system is minimally signed, make sure to bring a map and compass/GPS with you.
- ◇ Bring water or a filtration system.

### Camp on Durable Surfaces

- ◇ Campsites must be at least: 100 feet from the trail, 400 feet from Lake Michigan and 200 feet from Nordhouse Lake.
- ◇ Use existing sites when possible.

### Dispose of Waste Properly

- ◇ "Pack It Out" or dig a hole, at least 200 feet from water, camps or trails and 6 inches deep, to bury biodegradable waste.

### Minimize Campfire Impacts

- ◇ No campfires or bonfires on the beach.
- ◇ Do not burn driftwood.
- ◇ Use water to put out fires. Make sure fires are cold to the touch before leaving.

### Respect Wildlife

- ◇ Stay out of closed areas.

### Be Considerate of Other Visitors

- ◇ Remove trash when you leave.
- ◇ Keep noise to a minimum.
- ◇ No public nudity.
- ◇ Don't collect driftwood.

# Nordhouse Dunes Wilderness Area

## Directions - From Manistee

### Nurnberg Trailhead

- ◇ Travel south on US-31 for 7 miles.
- ◇ Turn right and travel west on W. Forest Trail Rd. for 2.5 miles.
- ◇ Turn left and travel south on Quarterline Rd. for 1.5 miles.
- ◇ Turn right and travel west on Nurnberg Rd. for 6.5 miles.

### GPS Coordinates:

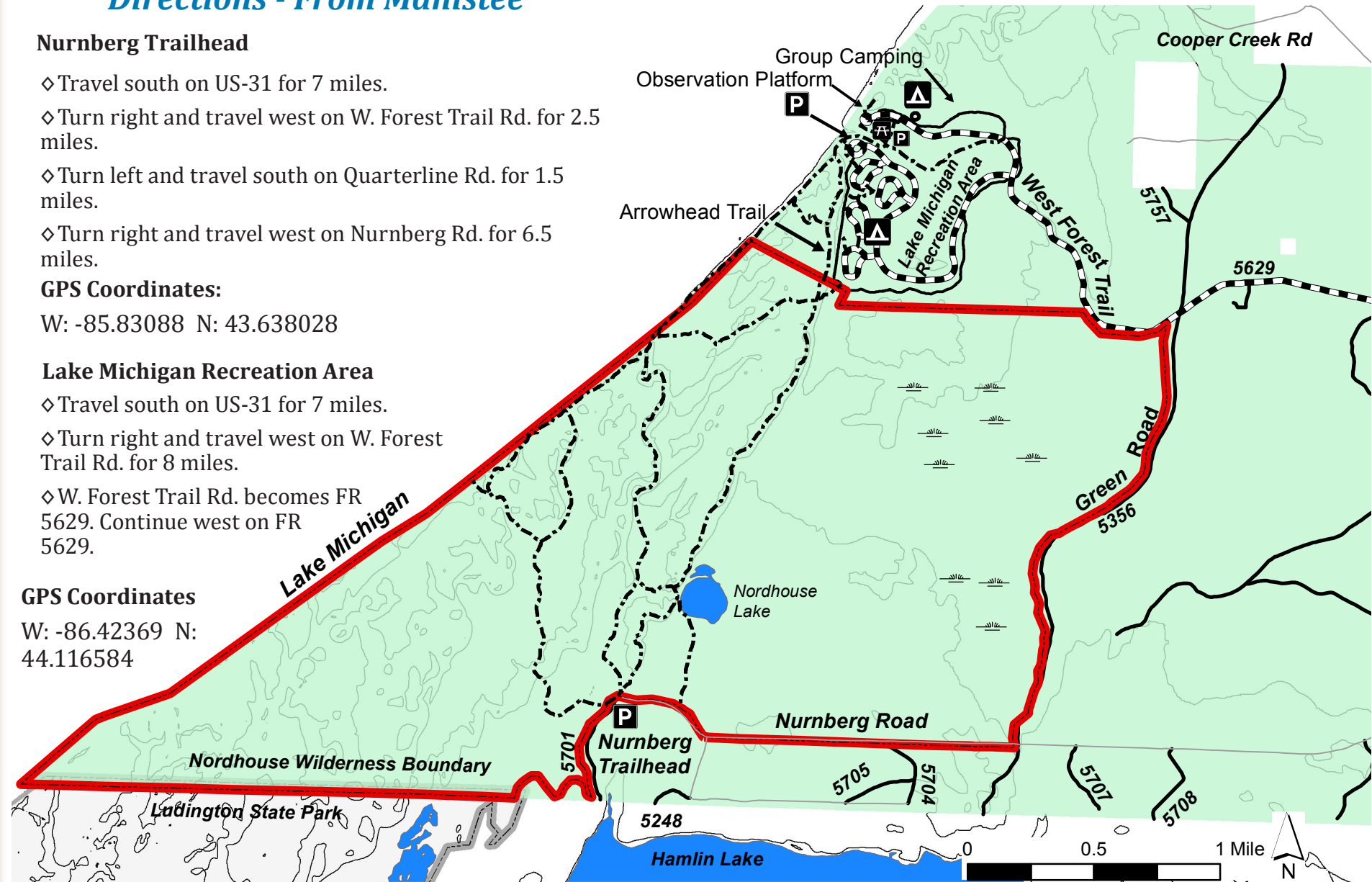
W: -85.83088 N: 43.638028

### Lake Michigan Recreation Area

- ◇ Travel south on US-31 for 7 miles.
- ◇ Turn right and travel west on W. Forest Trail Rd. for 8 miles.
- ◇ W. Forest Trail Rd. becomes FR 5629. Continue west on FR 5629.

### GPS Coordinates

W: -86.42369 N: 44.116584



A Recreation Enhancement Act fee is required at the trailheads.



- P** Parking
- A** Campground
- A** Day Use / Picnicking

- Foot Trail
- Bike Trail

- Paved Roads
- Forest Unpaved Road
- Other Unpaved Road

- Wilderness Boundary
- National Forest System Lands